

**CDS5668-10-C DESIGN NOTES**

THE STANDARD CDS5668-10-C CONFIGURATION IS SHOWN. ALTERNATE CONFIGURATIONS ARE AVAILABLE AND ARE LISTED BELOW. SOME CONFIGURATIONS MAY BE COMBINED TO MEET YOUR REQUIREMENTS.

**CONFIGURATION DESCRIPTION**

GRATED INLET ONLY (NO INLET PIPE)

GRATED INLET WITH INLET PIPE OR PIPES

CURB INLET ONLY (NO INLET PIPE)

CURB INLET WITH INLET PIPE OR PIPES

SEPARATE DL BAFLE, SINGLE INLET PIPE REQUIRED FOR THIS CONFIGURATION

SEDIMENT WEIR FOR HSPD/NCAT CONFORMING LIMITS

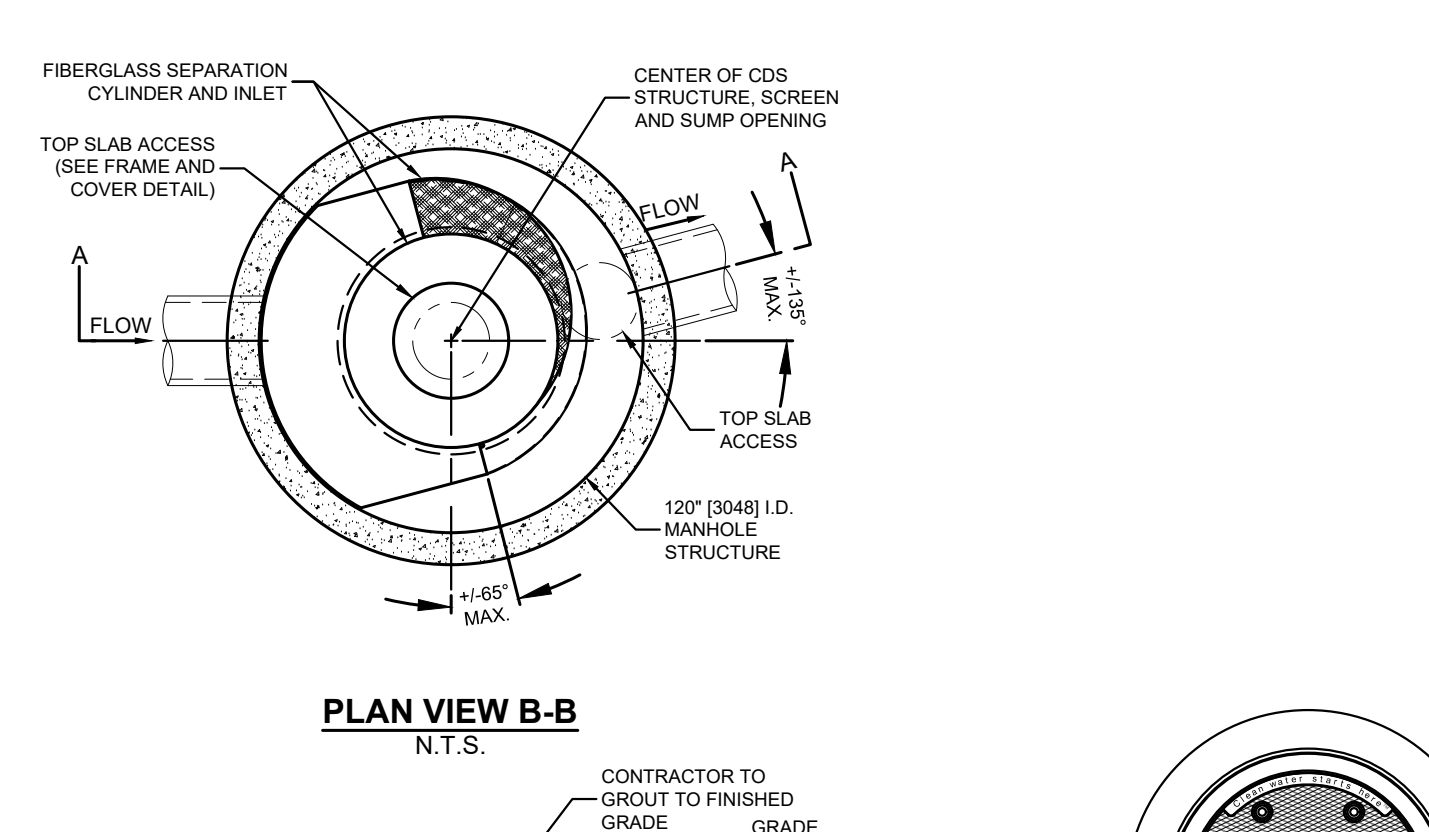
**FRAME AND COVER (DIAMETER VARIES) N.T.S.**

SITE SPECIFIC DATA REQUIREMENTS		SITE SPECIFIC DATA REQUIREMENTS		SITE SPECIFIC DATA REQUIREMENTS	
STRUCTURE ID	WQS OR LVS	STRUCTURE ID	WQS OR LVS	STRUCTURE ID	WQS OR LVS
WATER QUALITY FLOW RATE (CFS OR LVS)	11.11	WATER QUALITY FLOW RATE (CFS OR LVS)	18.40	WATER QUALITY FLOW RATE (CFS OR LVS)	23.27
PEAK FLOW RATE (CFS OR LVS)	10	PEAK FLOW RATE (CFS OR LVS)	10	PEAK FLOW RATE (CFS OR LVS)	10
RETURN PERIOD OF PEAK FLOW (YRS)	10	RETURN PERIOD OF PEAK FLOW (YRS)	10	RETURN PERIOD OF PEAK FLOW (YRS)	10
SCREEN APERTURE (2400 OR 4700)	2400	SCREEN APERTURE (2400 OR 4700)	2400	SCREEN APERTURE (2400 OR 4700)	2400

SITE SPECIFIC DATA REQUIREMENTS		SITE SPECIFIC DATA REQUIREMENTS		SITE SPECIFIC DATA REQUIREMENTS		
PIPE DATA	IE	MATERIAL	DIAMETER	PIPE DATA	IE	
INLET PIPE 1	HOPE	HOPE	24"	INLET PIPE 1	HOPE	
INLET PIPE 2	HOPE	HOPE	24"	INLET PIPE 2	HOPE	
OUTLET PIPE	HOPE	HOPE	24"	OUTLET PIPE	HOPE	
RIM ELEVATION	666.50	RIM ELEVATION	666.50	RIM ELEVATION	666.50	
ANTI-FLOUTATION BALLAST	WIDTH	HEIGHT		ANTI-FLOUTATION BALLAST	WIDTH	
NOTES/SPECIAL REQUIREMENTS	GRADED			NOTES/SPECIAL REQUIREMENTS	GRADED	

**CONTECH ENGINEERING SOLUTIONS LLC**  
 2025 Contech Parkway, Suite 400, Westborough, MA 01581  
 (508) 852-1122 | www.contech-engineering.com

CDS5668-10-C  
 INLINE CDS  
 STANDARD DETAIL



**CDS5678-10-C DESIGN NOTES**

THE STANDARD CDS5678-10-C CONFIGURATION IS SHOWN. ALTERNATE CONFIGURATIONS ARE AVAILABLE AND ARE LISTED BELOW. SOME CONFIGURATIONS MAY BE COMBINED TO MEET YOUR REQUIREMENTS.

**CONFIGURATION DESCRIPTION**

GRATED INLET ONLY (NO INLET PIPE)

GRATED INLET WITH INLET PIPE OR PIPES

CURB INLET ONLY (NO INLET PIPE)

CURB INLET WITH INLET PIPE OR PIPES

SEPARATE DL BAFLE, SINGLE INLET PIPE REQUIRED FOR THIS CONFIGURATION

SEDIMENT WEIR FOR HSPD/NCAT CONFORMING LIMITS

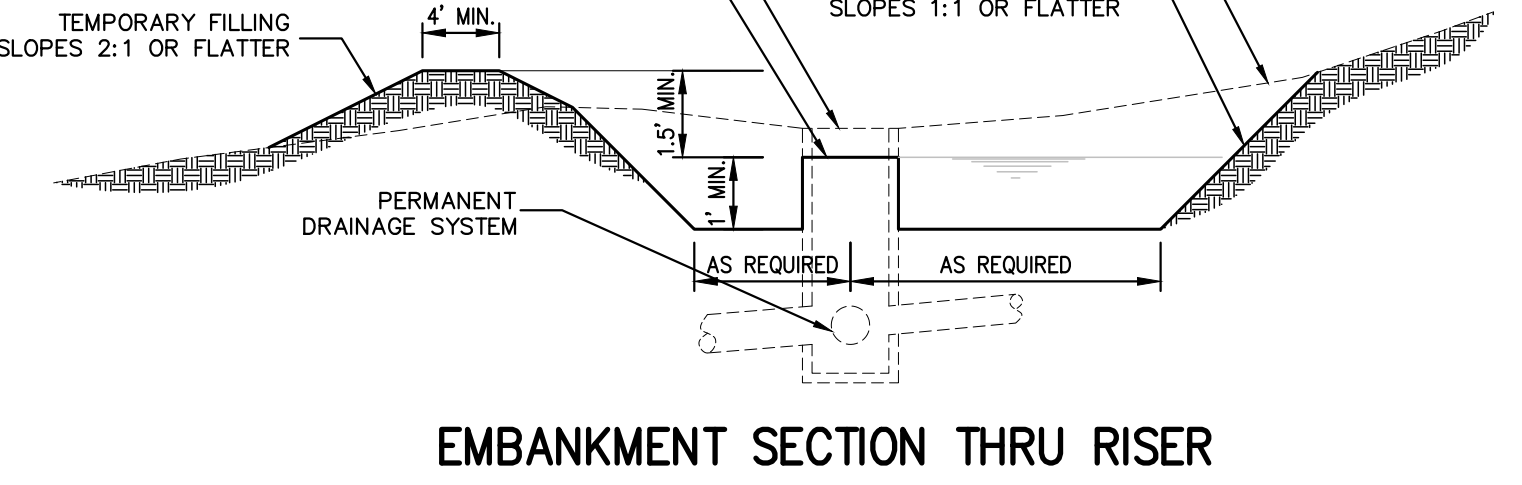
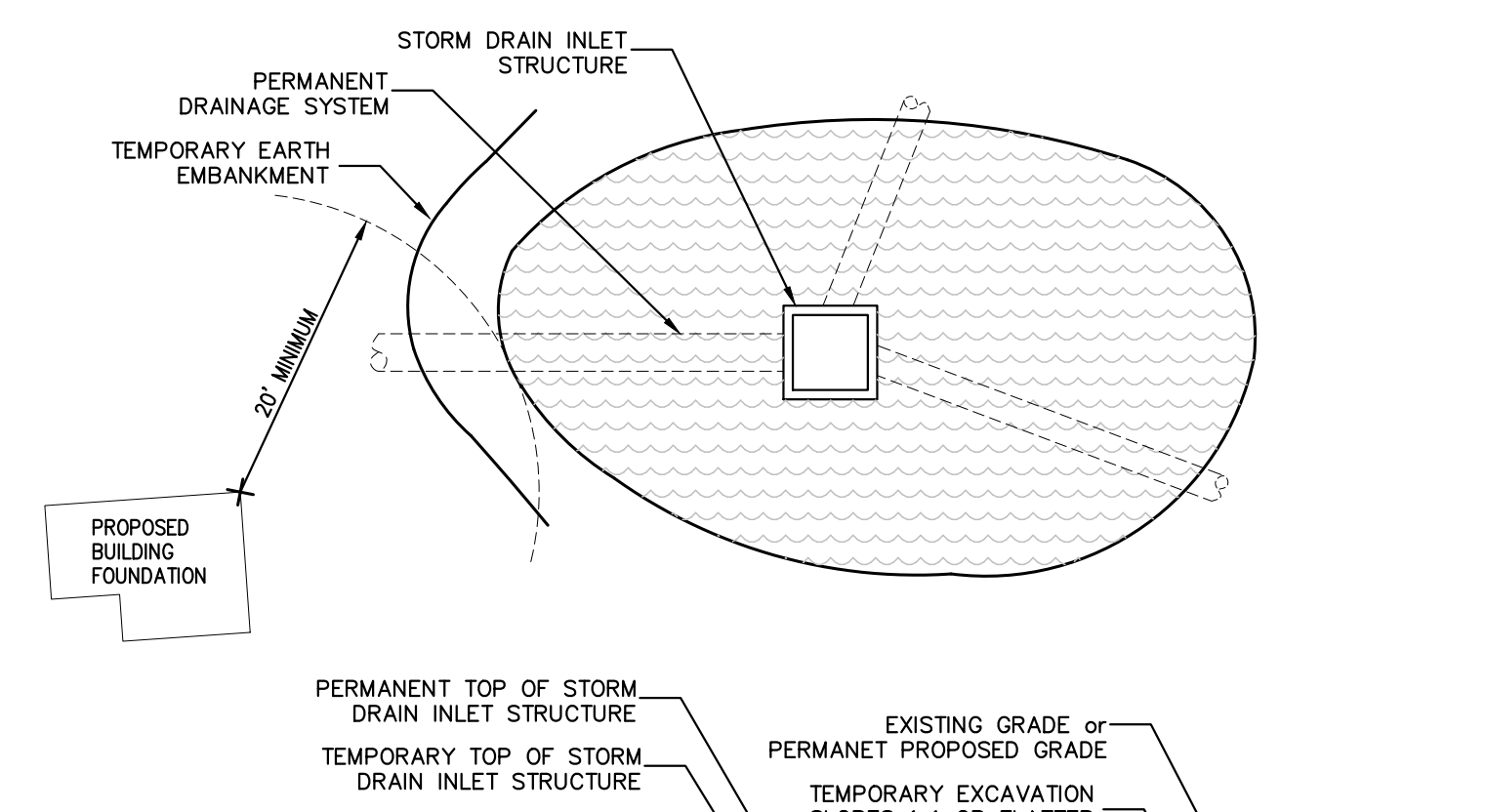
**FRAME AND COVER (DIAMETER VARIES) N.T.S.**

SITE SPECIFIC DATA REQUIREMENTS		SITE SPECIFIC DATA REQUIREMENTS		SITE SPECIFIC DATA REQUIREMENTS	
STRUCTURE ID	WQS OR LVS	STRUCTURE ID	WQS OR LVS	STRUCTURE ID	WQS OR LVS
WATER QUALITY FLOW RATE (CFS OR LVS)	11.11	WATER QUALITY FLOW RATE (CFS OR LVS)	18.40	WATER QUALITY FLOW RATE (CFS OR LVS)	23.27
PEAK FLOW RATE (CFS OR LVS)	10	PEAK FLOW RATE (CFS OR LVS)	10	PEAK FLOW RATE (CFS OR LVS)	10
RETURN PERIOD OF PEAK FLOW (YRS)	10	RETURN PERIOD OF PEAK FLOW (YRS)	10	RETURN PERIOD OF PEAK FLOW (YRS)	10
SCREEN APERTURE (2400 OR 4700)	2400	SCREEN APERTURE (2400 OR 4700)	2400	SCREEN APERTURE (2400 OR 4700)	2400

SITE SPECIFIC DATA REQUIREMENTS		SITE SPECIFIC DATA REQUIREMENTS		SITE SPECIFIC DATA REQUIREMENTS		
PIPE DATA	IE	MATERIAL	DIAMETER	PIPE DATA	IE	
INLET PIPE 1	HOPE	HOPE	24"	INLET PIPE 1	HOPE	
INLET PIPE 2	HOPE	HOPE	24"	INLET PIPE 2	HOPE	
OUTLET PIPE	HOPE	HOPE	24"	OUTLET PIPE	HOPE	
RIM ELEVATION	666.50	RIM ELEVATION	666.50	RIM ELEVATION	666.50	
ANTI-FLOUTATION BALLAST	WIDTH	HEIGHT		ANTI-FLOUTATION BALLAST	WIDTH	
NOTES/SPECIAL REQUIREMENTS	GRADED			NOTES/SPECIAL REQUIREMENTS	GRADED	

**CONTECH ENGINEERING SOLUTIONS LLC**  
 2025 Contech Parkway, Suite 400, Westborough, MA 01581  
 (508) 852-1122 | www.contech-engineering.com

CDS5678-10-C  
 INLINE CDS  
 STANDARD DETAIL



**EMBANKMENT SECTION THRU RISER**

**CONSTRUCTION SPECIFICATIONS**

- SEDIMENT SHALL BE REMOVED AND THE TRAP RESTORED TO ITS ORIGINAL DIMENSIONS WHEN THE SEDIMENT HAS ACCUMULATED TO 1/2 THE DESIGN DEPTH OF THE TRAP. REMOVED SEDIMENT SHALL BE DEPOSITED IN A SUITABLE AREA AND IN SUCH A MANNER THAT IT WILL NOT ESCAPE.
- THE VOLUME OF SEDIMENT STORAGE SHALL BE 1800 CUBIC FEET PER ACRE OF CONTRIBUTORY DRAINAGE.
- THE STRUCTURE SHALL BE INSPECTED AFTER EACH RAIN AND REPAIRS MADE AS REQUIRED.
- CONSTRUCTION OPERATIONS SHALL BE CARRIED OUT IN SUCH A MANNER THAT EROSION AND WATER POLLUTION SHALL BE MINIMIZED.
- THE SEDIMENT TRAP SHALL BE REMOVED AND THE AREA STABILIZED WHEN THE CONTRIBUTED DRAINAGE AREA HAS BEEN PROPERLY STABILIZED.
- ALL CUT SLOPES SHALL BE 1:1 OR FLATTER.

MAXIMUM DRAINAGE AREA: 3 ACRES

**WATER QUALITY CONTROL STRUCTURE CONTECH CDS5668-10-C**  
 (WQS E-8-1, WQS G-6-1 & WQS H-7)

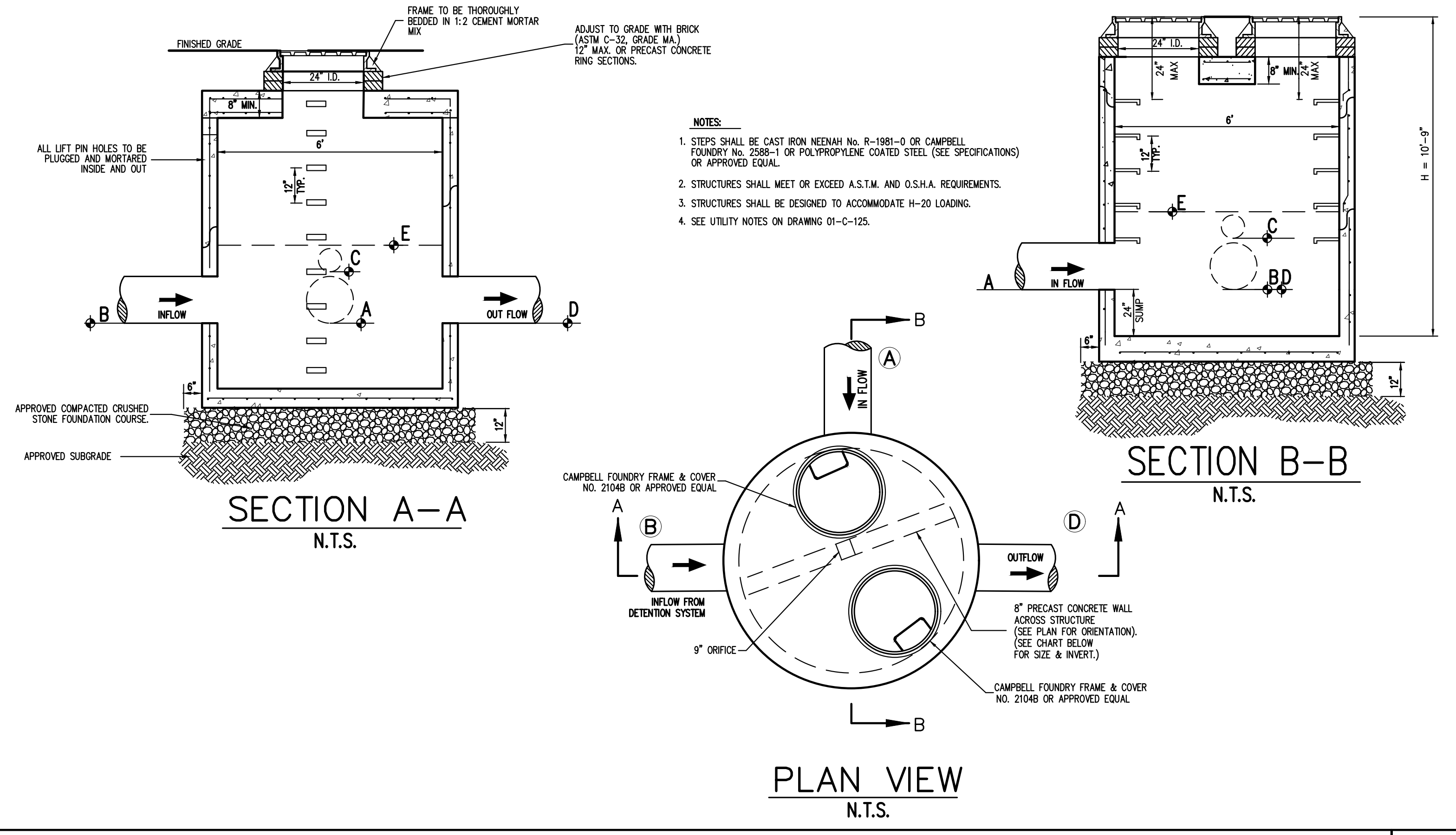
98

**WATER QUALITY CONTROL STRUCTURE CONTECH CDS5678-10-C**  
 (WQS A-12)

99

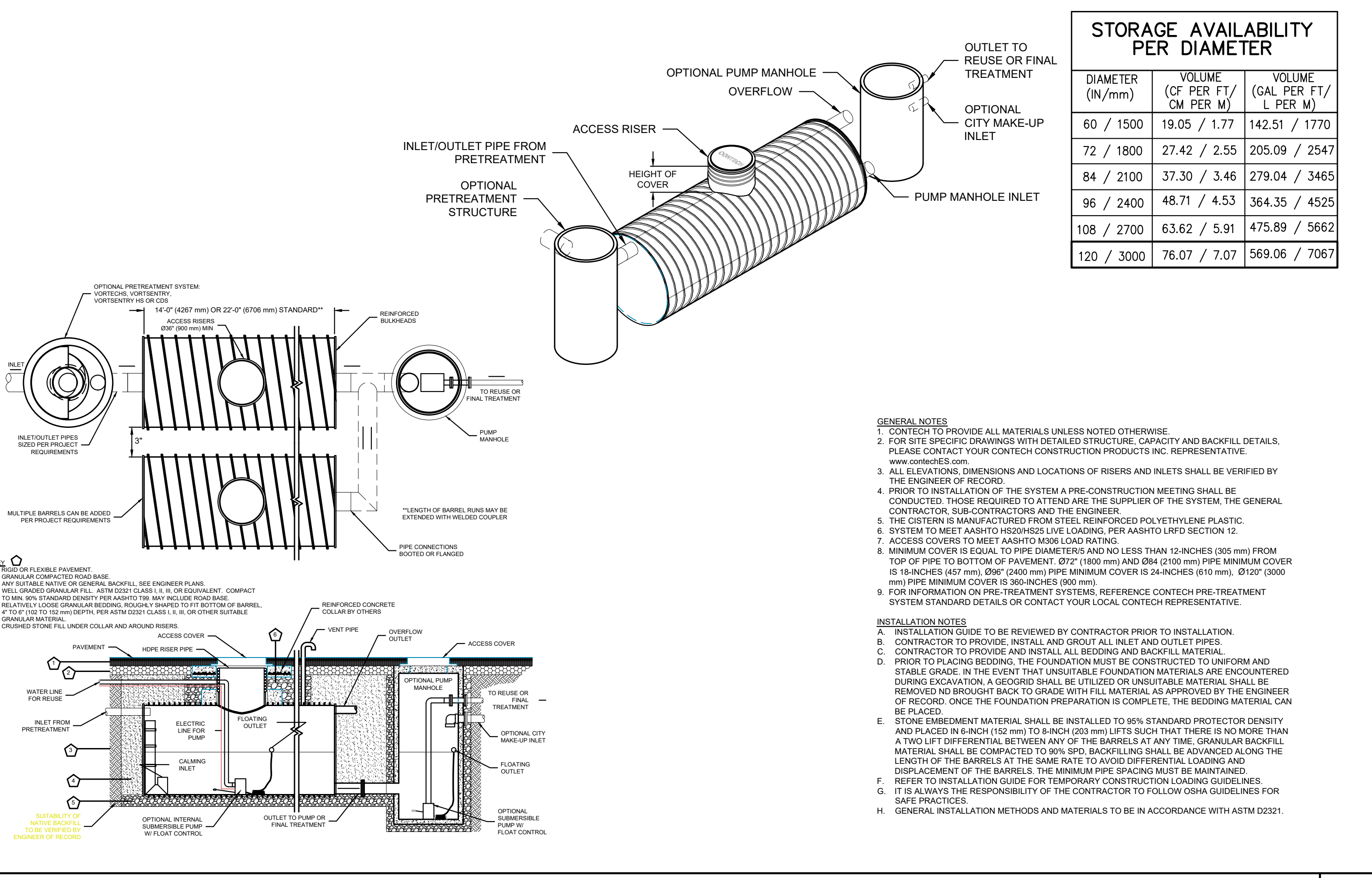
**CATCH BASIN SEDIMENT TRAP ST-III**

100



**OUTLET CONTROL STRUCTURE**  
 (OCS & OCS B-6-2)

101



**120" DIAMETER DURAMAXX SRPE CISTERN**

102

NOT FOR CONSTRUCTION

APPLICANT/OWNER:  
**PUTNAM SEABURY PARTNERS, L.P.**  
 JMC SITE DEVELOPMENT CONSULTANTS, LLC  
 JOHN MEYER CONSULTANTS, INC.  
 120 BELLEVILLE ROAD - WESTBORO, MA 01581  
 (508) 852-1122 | www.jmcinc.com

**JMC**  
 CONSTRUCTION DETAILS  
 COMMERCIAL CAMPUS AT FIELDS CORNER  
 TOWN OF SOUTH-EAST, NEW YORK

ANY ALTERATION OF PLANS, SPECIFICATIONS, PLATS AND REPORTS BEARING THE SEAL OF A LICENSED PROFESSIONAL ENGINEER OR LICENSED LAND SURVEYOR IS A VIOLATION OF SECTION 7209 OF THE NEW YORK STATE EDUCATION LAW, EXCEPT AS PROVIDED FOR BY SECTION 7209, SUBSECTION 2.

Drawn: **KSM** Approved: **RJP**  
 Scale: **NOT TO SCALE**  
 Date: **03/18/2019**  
 Project No: **14012**  
 HD-9016 | DET-9 | -  
 Drawing No: **C-908**