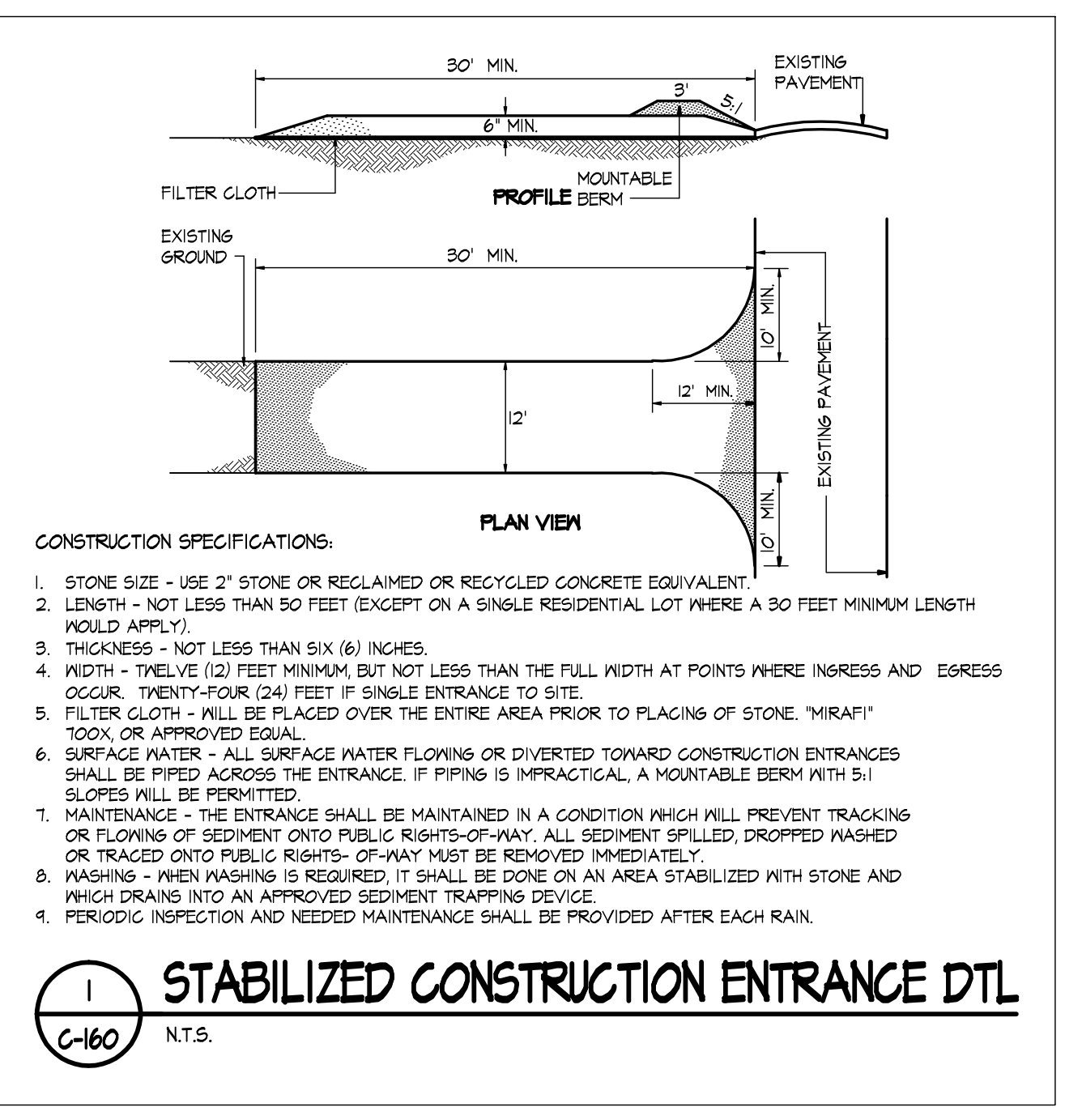
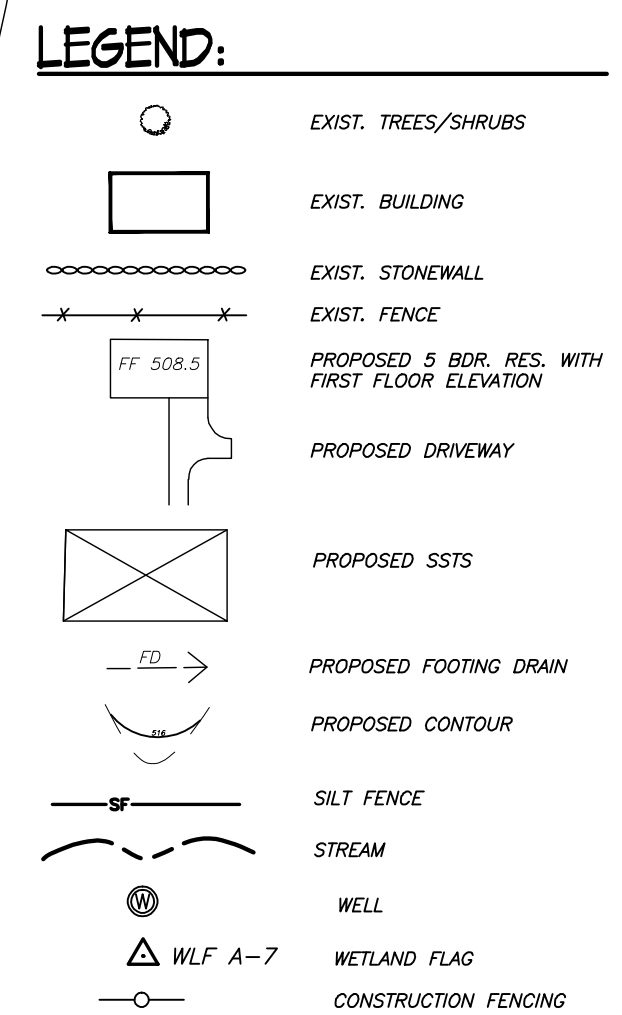
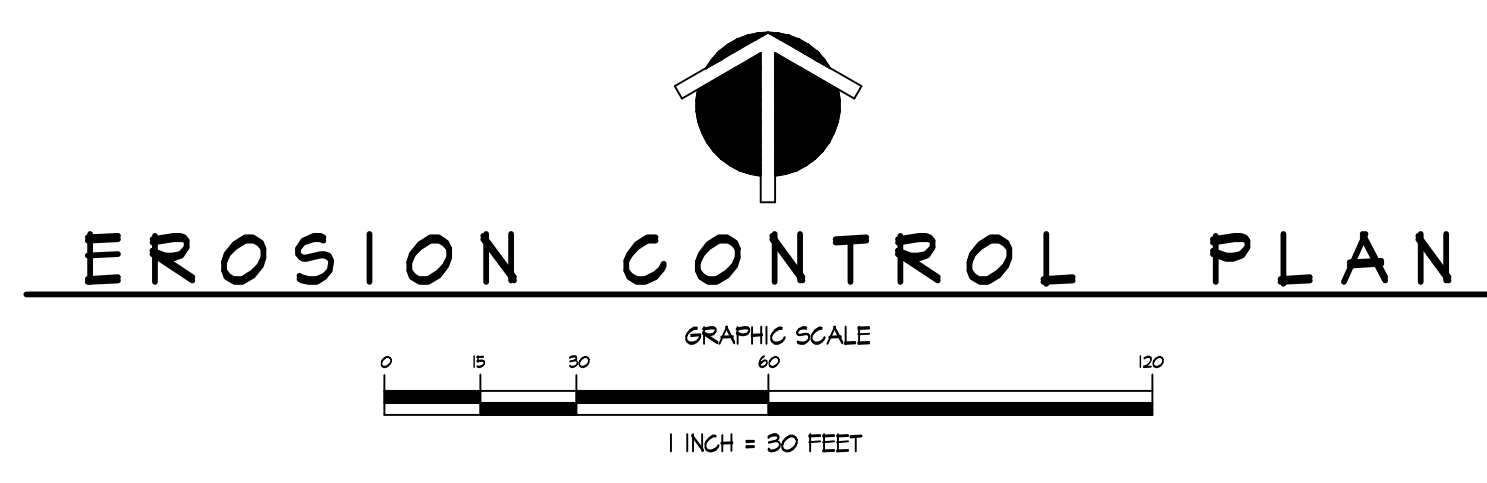
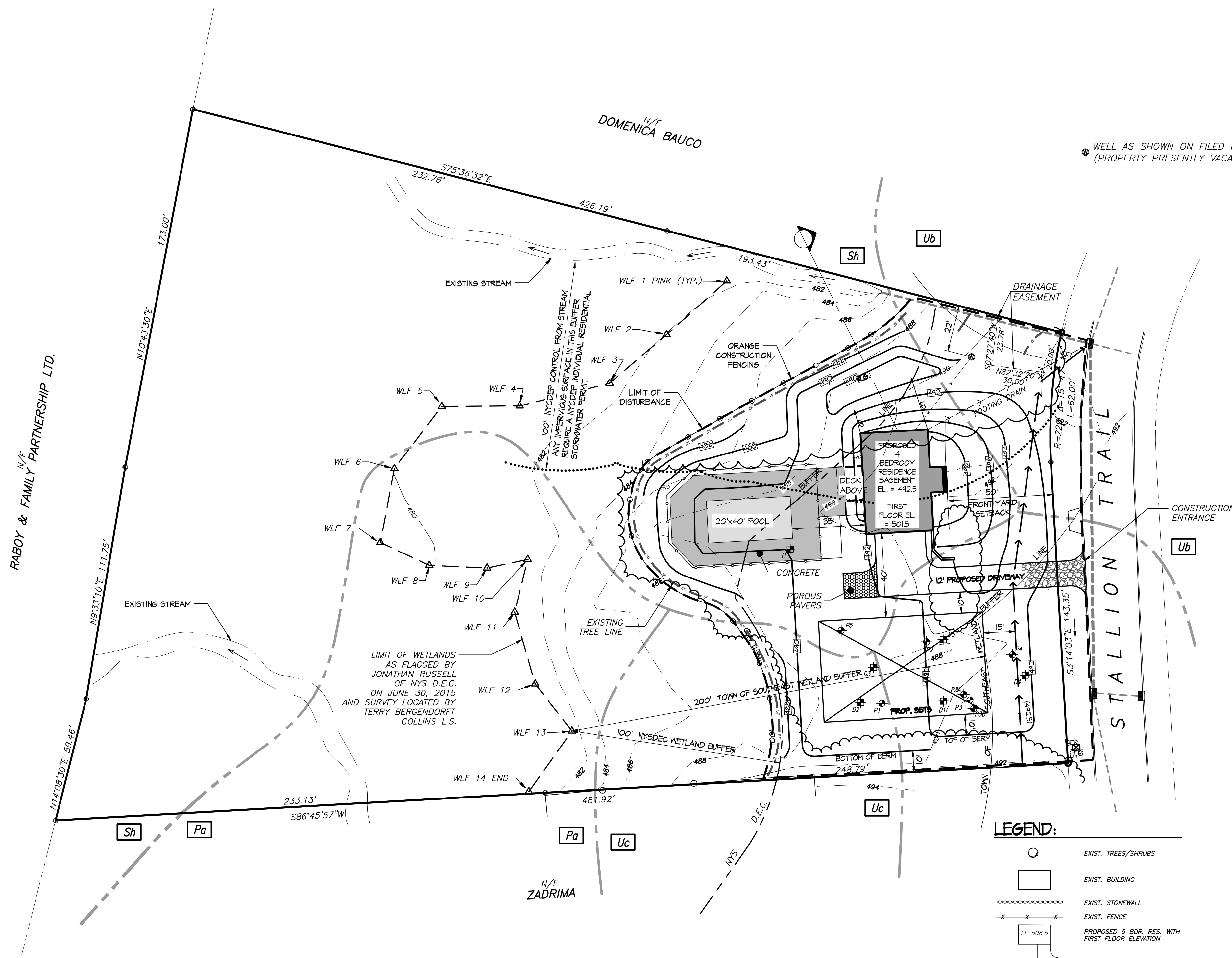


RABOY & FAMILY PARTNERSHIP LTD.



- CONSTRUCTION SPECIFICATIONS:**
- STONE SIZE - USE 2" STONE OR RECLAIMED OR RECYCLED CONCRETE EQUIVALENT.
  - LENGTH - NOT LESS THAN 50 FEET (EXCEPT ON A SINGLE RESIDENTIAL LOT WHERE A 30 FEET MINIMUM LENGTH WOULD APPLY).
  - THICKNESS - NOT LESS THAN SIX (6) INCHES.
  - WIDTH - TWELVE (12) FEET MINIMUM, BUT NOT LESS THAN THE FULL WIDTH AT POINTS WHERE INGRESS AND EGRESS OCCUR. TWENTY-FOUR (24) FEET IF SINGLE ENTRANCE TO SITE.
  - FILTER CLOTH - WILL BE PLACED OVER THE ENTIRE AREA PRIOR TO PLACING OF STONE. "MIRAFI" 100X, OR APPROVED EQUAL.
  - SURFACE WATER FLOWING OR DIVERTED TOWARD CONSTRUCTION ENTRANCES SHALL BE PIPED ACROSS THE ENTRANCE. IF PIPING IS IMPRACTICAL, A MOUNTABLE BERM WITH 5:1 SLOPES WILL BE PERMITTED.
  - MAINTENANCE - THE ENTRANCE SHALL BE MAINTAINED IN A CONDITION WHICH WILL PREVENT TRACKING OR FLOWING OF SEDIMENT ONTO PUBLIC RIGHTS-OF-WAY. ALL SEDIMENT SPILLED, DROPPED, WASHED OR TRACED ONTO PUBLIC RIGHTS-OF-WAY MUST BE REMOVED IMMEDIATELY.
  - WASHING - WHEN WASHING IS REQUIRED, IT SHALL BE DONE ON AN AREA STABILIZED WITH STONE AND WHICH DRAINS INTO AN APPROVED SEDIMENT TRAPPING DEVICE.
  - PERIODIC INSPECTION AND NEEDED MAINTENANCE SHALL BE PROVIDED AFTER EACH RAIN.

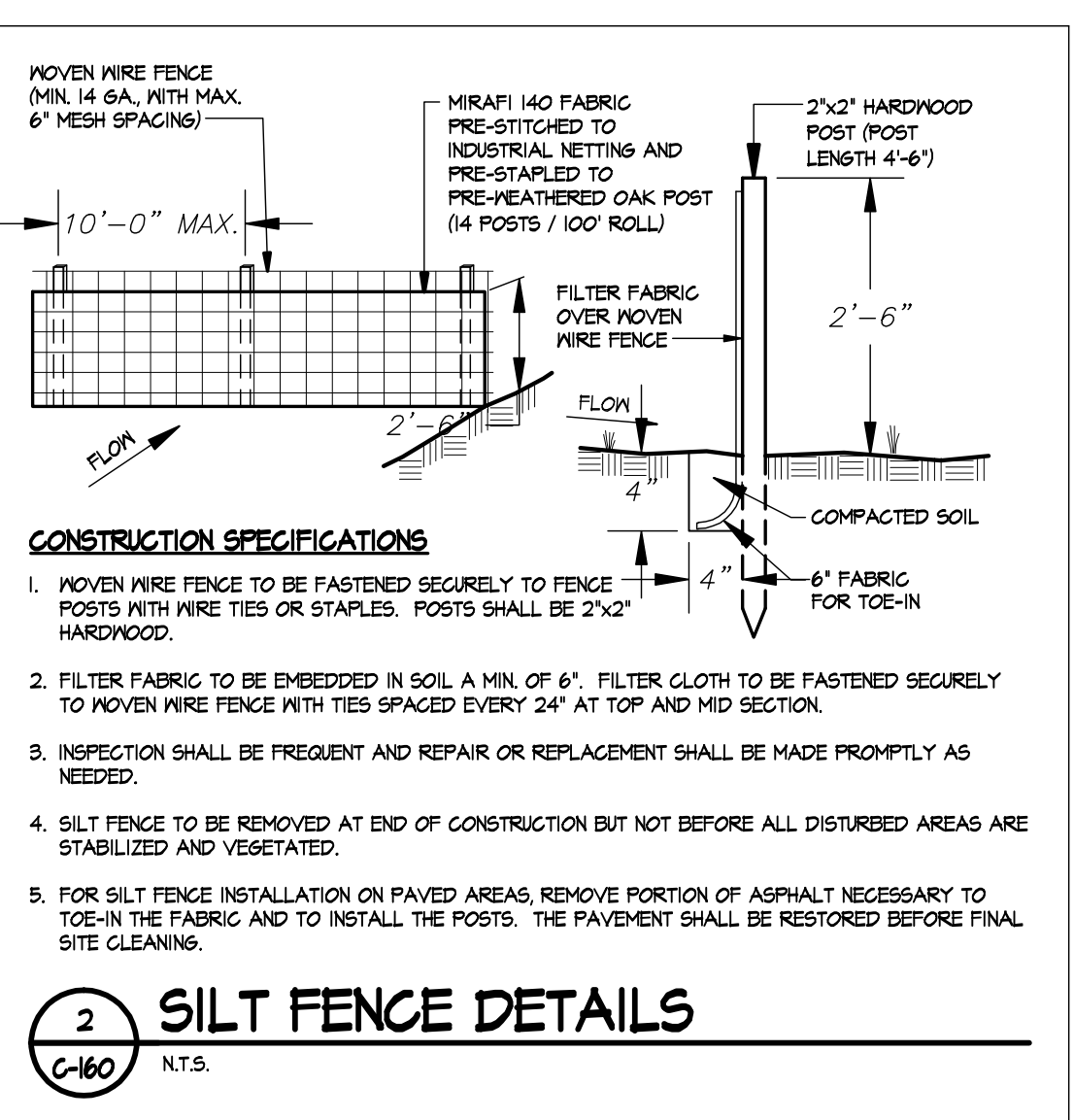
- STABILIZATION NOTES:**
- TEMPORARY VEGETATIVE COVER:
    - SCARIFY COMPACTED SOIL AREAS.
    - SEED AS FOLLOWS:
      - SPRINGS/SUMMER/EARLY FALL PLANTING: ANNUAL RYEGRASS AND CEREAL OATS AT 30 LBS./AC.
      - LATE FALL/EARLY WINTER PLANTING: AROOSTOOK WINTER RYE AT 100 LBS./AC.
    - MULCH WITH NOT LESS THAN ONE (1) INCH AND NOT MORE THAN THREE (3) INCHES OF STRAW WITH AN APPLICATION RATE OF TWO TONS PER ACRE. PROVIDE 90 PERCENT COVERAGE TO PROTECTED SURFACE, ANCHOR AS NEEDED.
    - DURING WINTER CONSTRUCTION OR PERIODS OF WET WEATHER, TEMPORARY SLOPE STABILIZATION SHALL BE PROVIDED BY EITHER A ROLLED EROSION CONTROL PRODUCT OR A HEAVY MULCH LAYER SUITABLY ANCHORED. THE CONTRACTOR MUST RESEED THE AREA IN THE SPRING WITH THE APPROPRIATE SEEDING.
    - DURING DRY WEATHER CONSTRUCTION, ALL SEEDING AREAS ARE TO BE ADEQUATELY WATERED TO ENSURE VEGETATED COVER.
  - PERMANENT VEGETATIVE COVER:
    - GRADE TO FINISHED SLOPES.
    - SCARIFY COMPACTED SOIL AREAS.
    - TOPSOIL WITH NOT LESS THAN FOUR (4) INCHES OF SUITABLE TOPSOIL MATERIAL (SIX (6) INCHES AT 66% AREA).
    - SEED AS FOLLOWS:
 

SEED	LBS./AC.
KENTUCKY BLUE GRASS	20
CREeping RED FESCUE	20
RED TOP OR RYE GRASS	5
    - MULCH WITH NOT LESS THAN ONE (1) INCH AND NOT MORE THAN THREE (3) INCHES OF STRAW WITH AN APPLICATION RATE OF TWO TONS PER ACRE. PROVIDE 90 PERCENT COVERAGE TO PROTECTED SURFACE, ANCHOR AS NEEDED.
    - FOR DISTURBED AREAS WITH SLOPES GREATER THAN 1V:1H, INSTEAD OF MULCHING, EROSION CONTROL BLANKET/MATTING SUCH AS NORTH AMERICAN GREEN SIS0 (OR APPROVED EQUAL) SHALL BE USED. THE DISTURBED AREA SHALL BE PREPARED AS RECOMMENDED BY THE EROSION CONTROL BLANKET/MATTING MANUFACTURER. PRIOR TO INSTALLATION, DISTURBED AREAS SHALL BE SEEDING AS DESCRIBED ABOVE.

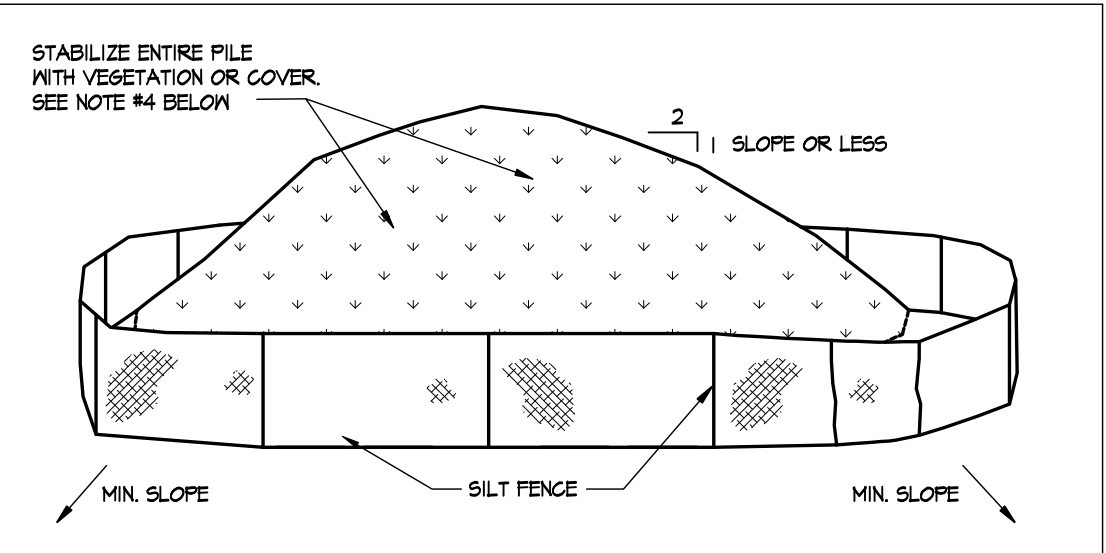
- PLANTING NOTES:**
- ALL PLANTS SHALL BE BALLED AND BURLAPPED OR CONTAINER GROWN.
  - ALL LANDSCAPING SHOWN SHALL BE MAINTAINED IN A HEALTHY GROWING CONDITION THROUGHOUT THE DURATION OF THE USE BEING SERVED. PLANTS NOT SO MAINTAINED SHALL BE REPLACED WITH HEALTHY NEW PLANTS OF COMPARABLE SIZE, TYPE AND QUANTITY AT THE BEGINNING OF THE IMMEDIATELY FOLLOWING GROWING SEASON.
  - TOPSOIL ALL DISTURBED AREAS WITH NOT LESS THAN FOUR (4) INCHES OF SUITABLE TOPSOIL MATERIAL.
  - SEED DISTURBED AREA IN ACCORDANCE WITH THE "SEEDING NOTES".
  - MULCH ALL AREAS WITH STRAW AT THE RATE OF TWO TONS PER ACRE.
  - AFTER ESTABLISHMENT OF DENSE, VIGOROUS VEGETATION, PHOSPHORUS BASED FERTILIZERS SHALL NOT BE USED. ONLY NON-PHOSPHORUS BASED FERTILIZER MAY BE APPLIED TO THE LAWNS AND GRASSSED AREAS.

- SEEDING NOTES:**
- SEED AS FOLLOWS: "NATIVE STEEP SLOPE MIX WITH ANNUAL RYEGRASS" SEED MIX ERNMX-101 AS MFR. BY ERNST CONSERVATION SEEDS, WITH AN APPLICATION RATE OF 60 LBS./ACRE.

**DISTURBANCE:**  
AREA OF DISTURBANCE = 0.84 ACRES



- CONSTRUCTION SPECIFICATIONS:**
- MOW WIRE FENCE (MIN 14 GA. WITH MAX. 6" MESH SPACING).
  - FILTER FABRIC TO BE EMBEDDED IN SOIL A MIN. OF 6". FILTER CLOTH TO BE FASTENED SECURELY TO MOW WIRE FENCE WITH TIES SPACED EVERY 24" AT TOP AND MID SECTION.
  - INSPECTION SHALL BE FREQUENT AND REPAIR OR REPLACEMENT SHALL BE MADE PROMPTLY AS NEEDED.
  - SILT FENCE TO BE REMOVED AT END OF CONSTRUCTION BUT NOT BEFORE ALL DISTURBED AREAS ARE STABILIZED AND VEGETATED.
  - FOR SILT FENCE INSTALLATION ON PAVED AREAS, REMOVE PORTION OF ASPHALT NECESSARY TO TIE-IN THE FABRIC AND TO INSTALL THE POSTS. THE PAVEMENT SHALL BE RESTORED BEFORE FINAL SITE CLEANING.



- INSTALLATION NOTES:**
- AREA CHOSEN FOR STOCKPILING OPERATIONS SHALL BE DRY AND STABLE.
  - MAXIMUM SLOPE OF STOCKPILE SHALL BE 1:2.
  - UPON COMPLETION OF SOIL STOCKPILING, EACH PILE SHALL BE SURROUNDED WITH SILT FENCINGS.
  - SPRINGS/SUMMER/FALL SEEDING: SEED WITH PERENNIAL RYE GRASS @ 40 LBS./AC. STABILIZATION FROM NOVEMBER THROUGH MARCH 31 SHALL BE BY A ROLLED EROSION CONTROL PRODUCT OR MAY BE HYDROSEEDING WITH WINTER RYE WITH A HEAVY MULCH LAYER. RESEED STOCKPILE IN SPRING AS NOTED ABOVE.
  - SEE SILT FENCE DETAIL FOR SILT FENCE INSTALLATION SPECIFICATIONS.

**PUTNAM ENGINEERING, PLLC**  
ENGINEERS - ARCHITECTS  
4 OLD ROUTE 6, BREWSTER, NEW YORK 10504  
(845) 274-6189 FAX (845) 274-6164  
● PUTNAM ENGINEERING PLLC 2015

PURSUANT TO NEW YORK STATE EDUCATION LAW, ARTICLE 145, SECTION 7209 SUBDIVISION 2, "IT IS A VIOLATION OF THIS LAW FOR ANY PERSON UNLESS HE IS ACTING UNDER THE DIRECTION OF A LICENSED PROFESSIONAL ENGINEER, TO ALTER AN ITEM IN ANY WAY, IF AN ITEM BEARING THE SEAL OF AN ENGINEER IS ALTERED. THE ALTERING ENGINEER SHALL AFFIX TO THE ITEM HIS SEAL AND THE NOTATION "ALTERED BY" FOLLOWED BY HIS SIGNATURE AND THE DATE OF SUCH ALTERATION, AND A SPECIFIC DESCRIPTION OF THE ALTERATION."

REVISIONS			
NO.	DATE	DESCRIPTION	
1	12 JUN 14	PER CONSULTANTS MEMO'S	

PROJECT: 5575 PLAN PREPARED FOR:  
**THE CRECCO RESIDENCE**  
PROPERTY LOCATION:  
62 STALLION TRAIL, BREWSTER, NY 10504  
(TOWN OF SOUTHEAST)  
PUTNAM COUNTY, NEW YORK  
TAX MAP NO. 79.13, BLOCK 1, LOT 22

DATE: 22 DEC 15  
PROJECT MANAGER: FML  
DRAWN BY: FKS  
CHECKED BY: FML  
SCALE: AS NOTED

DRAWING: **EROSION CONTROL PLAN**

PROJECT NUMBER: 8254  
DRAWING NUMBER: **C-160**  
SHEET 4 OF 5